

ABSOLUTE AUCTION

SATURDAY, DECEMBER 14, 2024, 10:00 AM



LAND

LIVE AUCTION WITH ONLINE BIDDING



REAL ESTATE

Exciting land auction featuring approx. 67.7 acres open tillable land and hideaway pasture/homestead tracts. Two-thirds of the land farmed this year. Land lays real nice w/ good road elevation. Slopes from back to front. Situated on a quiet country road with nice homes in the area. Land zoned rural residential in Lexington Twp. Nice location to Marlington Local Schools.

DIVIDED AS FOLLOWS:

PARCEL #1: 20.2 acres vacant tillable land. Lays very nice, good elevation. Approx. 250' road frontage.

PARCEL #2: 28.4-acre hideaway. Homesite or recreational tract. Partly wooded, pastureland with driveway nearly all the way back. You'll like this parcel w/ 90' road frontage.

PARCEL #3: 19.2 acres vacant tillable land, nice elevation w. tree lines around border. 90' frontage.

NOTE: Land offered in parcels & as entirety, selling whichever way brings the most. Walk this land at your convenience. Call George Kiko at 330.418.1095 for help w/ financing. Gas/oil rights & royalties do not transfer.

TERMS ON REAL ESTATE

10% down auction day, balance due at closing. A 10% buyer's premium will be added to the highest bid to establish the purchase price. Any desired inspections must be made prior to bidding. All information contained herein was derived from sources believed to be correct. Information is believed to be accurate but not guaranteed. Property to be offered as a Multi Par auction and sold whichever way it brings the most.

AUCTION BY ORDER OF
RGH Farm Ltd.



3 COUNTRY LAND
PARCELS, 68
ACRES TOTAL

Marlington Local
Schools, Lexington
Twp., Stark Co., OH

APPROX. 12475 SNODE ST. NE,
ALLIANCE, OH 44601



GEORGE P. KIKO
AUCTIONEER/REALTOR®
330.418.1095
george@kikocompany.com

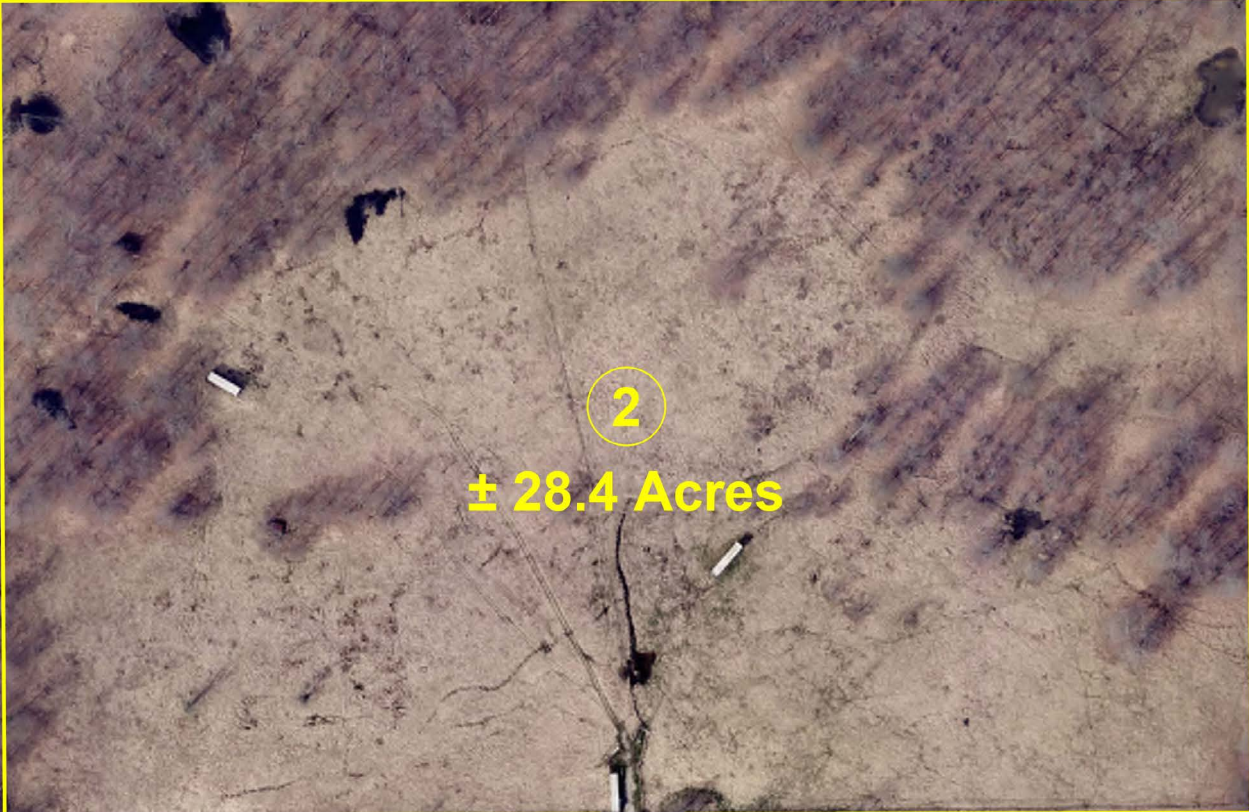
www.kikoauctions.com | 800.533.5456

Information is believed to be
accurate but not guaranteed.
KIKO Auctioneers



Scan for auction
details, including
directions.

Absolute Auction.
All sells to the
highest bidders
on location.



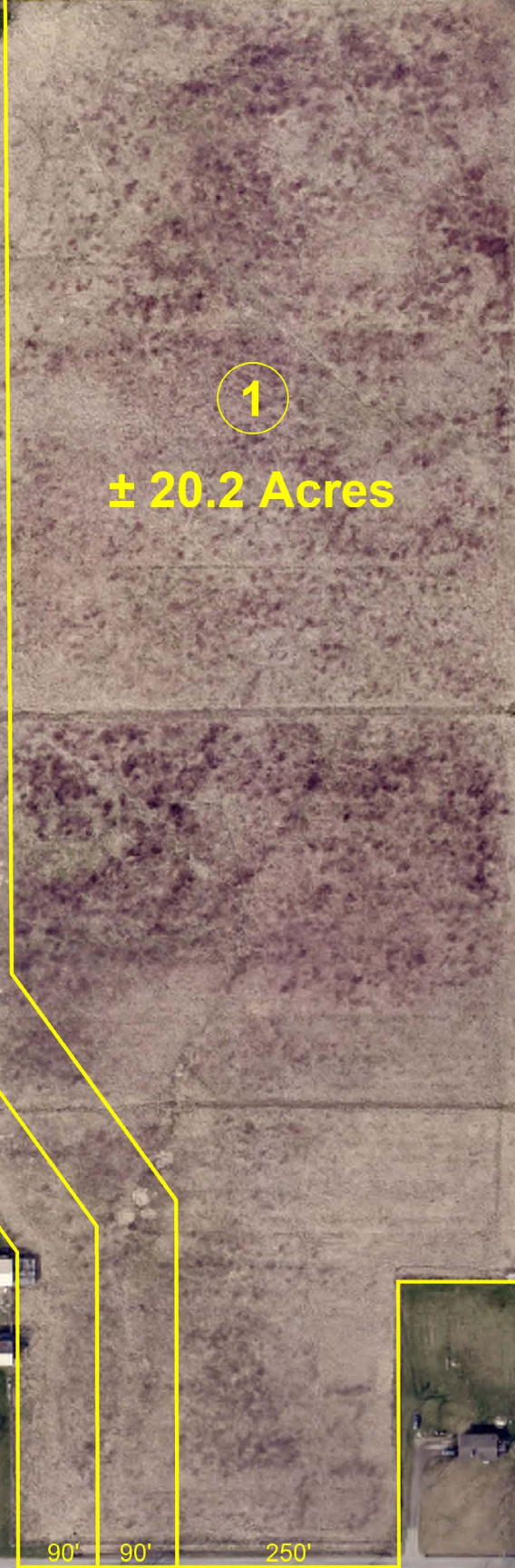
2

± 28.4 Acres



3

± 19.1 Acres



1

± 20.2 Acres

90' 90' 250'

Measurements are approximate and subject to actual survey.